

# FJORD

## COLLECTION



FJORD Specialist of PVC Products though Global Networking.Perfect Supporting from Korea & China, Always provide best Solution within 24 Hours.Exporting to over 50 countries across America, Asia, Africa, Middle East etc & Quality control by Global standard. FJORD has manufactured diverse products related Polyvinylchloride (PVC), Below is all list we producing.Always do effort to develop the Technology and to stand at the competitive edge by operating the distinguished laboratory.



## Specification

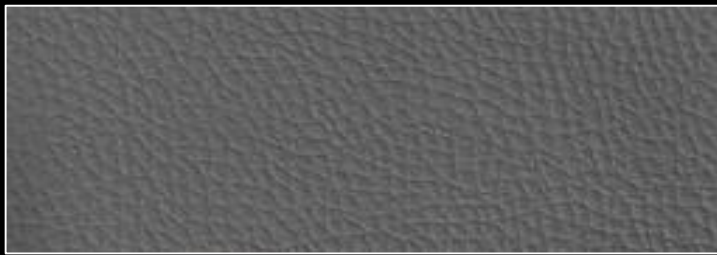
|              |                         |
|--------------|-------------------------|
| Emboss       | : WM(U)-16              |
| Size         | : 0.80mm x 55" (140cm)  |
| Backing      | : L.Cross Knitting      |
| Weight       | : 600±5g/m <sup>2</sup> |
| 20ft Loading | : 21,000M               |

## Feature

|                               |   |
|-------------------------------|---|
| Color Fastness                | : KSK0650 Grade 5                                   |
| Abrasion Resistance           | : ASTM D415-2002 Grade A                            |
| Migration of Certain Elements | : <10PPM  |
| UV Test                       | : Grade 8   |
| Anti Mildew                   | : Passed  |
| Scratch Resistance            | : Passed  |
| Cadmium Content               | : Passed ECD 91/338/EEC                             |
| Flammability                  | : Passed (California Technical 117, Section E.2000) |



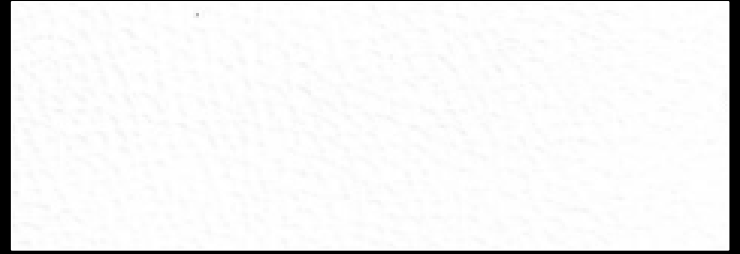
© Pink



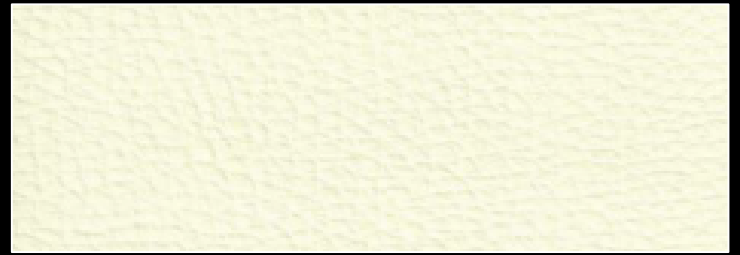
© Grey



© Chocolate



© White



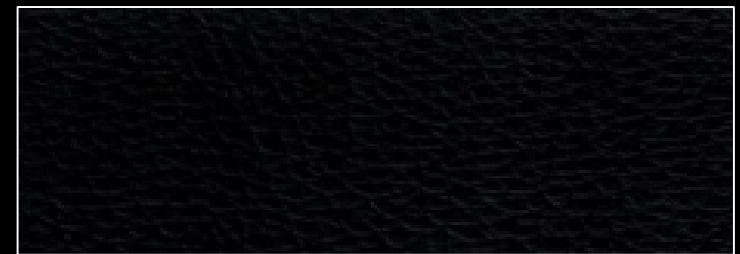
© Beige



© Blue



© Brown



© Black

## Specification

|              |                         |
|--------------|-------------------------|
| Emboss       | : WM(U)-16              |
| Size         | : 0.90mm x 55" (140cm)  |
| Backing      | : Non-Woven             |
| Weight       | : 340±5g/m <sup>2</sup> |
| 20ft Loading | : 19,000M               |
| 40ft Loading | : 43,000M               |

## Feature

|                               |   |
|-------------------------------|---|
| Color Fastness                | : KSK0650 Grade 5                                   |
| Abrasion Resistance           | : ASTM D415-2002 Grade A                            |
| Migration of Certain Elements | : <10PPM  |
| UV Test                       | : Grade 8   |
| Anti Mildew                   | : Passed  |
| Scratch Resistance            | : Passed  |
| Cadmium Content               | : Passed ECD 91/338/EEC                             |
| Flammability                  | : Passed (California Technical 117, Section E.2000) |



© White



© Beige



© Pink



© Blue



© Orange



© Yellow



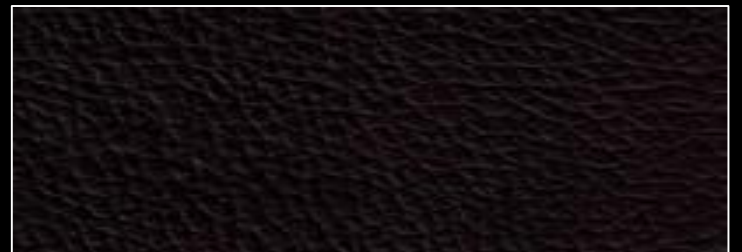
© Grey



© Brown



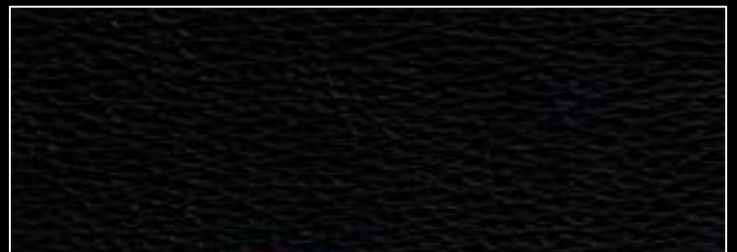
© T/Brown



© Chocolate



© P/Black



© Black

## Specification

|              |                          |
|--------------|--------------------------|
| Emboss       | : WM-227                 |
| Size         | : 1.00mm x 55" (140cm)   |
| Backing      | : Non-Woven              |
| Weight       | : 430±10g/m <sup>2</sup> |
| 20ft Loading | : 17,500M                |
| 40ft Loading | : 41,000M                |

## Feature

|                               |   |
|-------------------------------|---|
| Color Fastness                | : KSK0650 Grade 5                                   |
| Abrasion Resistance           | : ASTM D415-2002 Grade A                            |
| Migration of Certain Elements | : <10PPM  |
| UV Test                       | : Grade 8   |
| Anti Mildew                   | : Passed  |
| Scratch Resistance            | : Passed  |
| Cadmium Content               | : Passed ECD 91/338/EEC                             |
| Flammability                  | : Passed (California Technical 117, Section E.2000) |



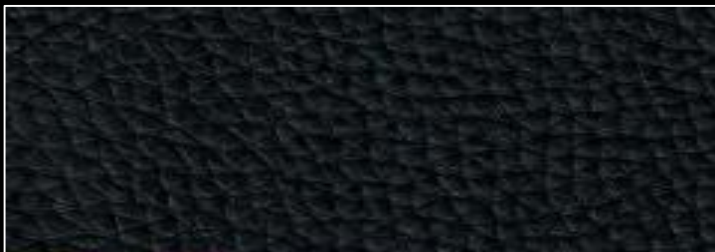
© White



© Beige



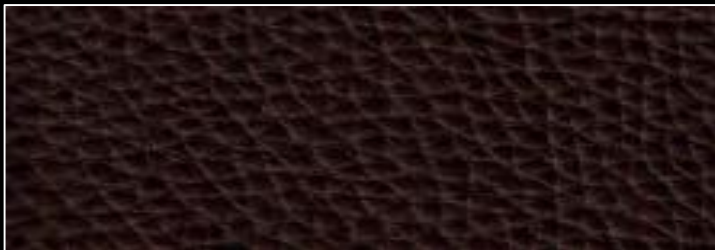
© Green



© D/Green



© Brown



© D/Brown



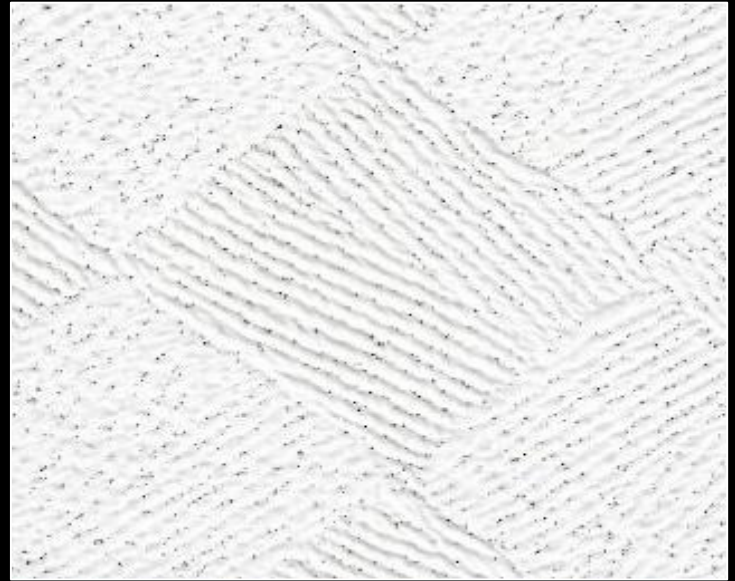
© Black

## Specification

|              |                             |
|--------------|-----------------------------|
| Emboss       | : WM-228                    |
| Size         | : 1.00mm x 55" (140cm)      |
| Backing      | : Non-Woven                 |
| Weight       | : $430 \pm 10 \text{g/m}^2$ |
| 20ft Loading | : 17,500M                   |
| 40ft Loading | : 41,000M                   |

## Feature

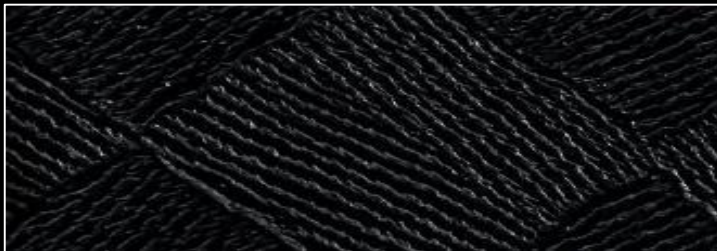
|                               |   |
|-------------------------------|---|
| Color Fastness                | : KSK0650 Grade 5                                   |
| Abrasion Resistance           | : ASTM D415-2002 Grade A                            |
| Migration of Certain Elements | : <10PPM  |
| UV Test                       | : Grade 8   |
| Anti Mildew                   | : Passed  |
| Scratch Resistance            | : Passed  |
| Cadmium Content               | : Passed ECD 91/338/EEC                             |
| Flammability                  | : Passed (California Technical 117, Section E.2000) |



© White



© Beige



© Black



© Grey

## Specification

|              |                          |
|--------------|--------------------------|
| Emboss       | : ML-001                 |
| Size         | : 0.70mm x 55" (140cm)   |
| Backing      | : 28's Knitting          |
| Weight       | : 660±10g/m <sup>2</sup> |
| 20ft Loading | : 24,000M                |

## Feature

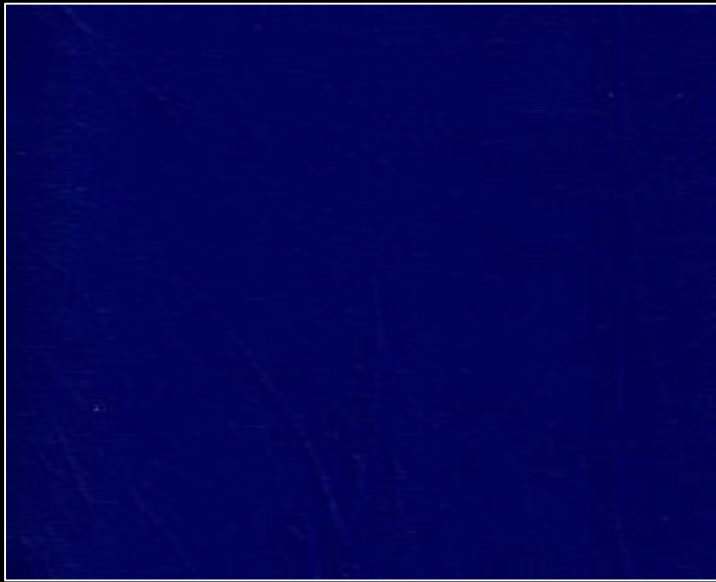
|                               |   |
|-------------------------------|---|
| Color Fastness                | : KSK0650 Grade 5                                   |
| Abrasion Resistance           | : ASTM D415-2002 Grade A                            |
| Migration of Certain Elements | : <10PPM  |
| UV Test                       | : Grade 8   |
| Anti Mildew                   | : Passed  |
| Scratch Resistance            | : Passed  |
| Cadmium Content               | : Passed ECD 91/338/EEC                             |
| Flammability                  | : Passed (California Technical 117, Section E.2000) |



© White



© Beige



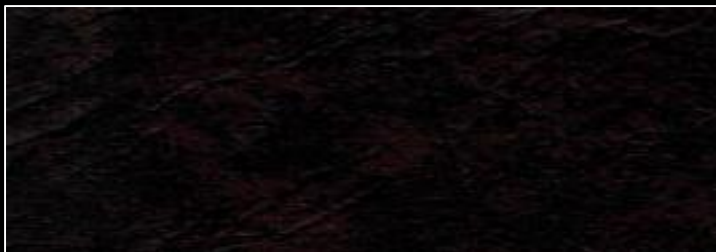
© Blue



© Grey



© Brown



© Chocolate



© Black

## Specification

|              |                          |
|--------------|--------------------------|
| Emboss       | : ML-001                 |
| Size         | : 0.80mm x 55" (140cm)   |
| Backing      | : L.Cross Knitting       |
| Weight       | : 580±10g/m <sup>2</sup> |
| 20ft Loading | : 21,000M                |

## Feature

|                               |   |
|-------------------------------|---|
| Color Fastness                | : KSK0650 Grade 5                                   |
| Abrasion Resistance           | : ASTM D415-2002 Grade A                            |
| Migration of Certain Elements | : <10PPM  |
| UV Test                       | : Grade 8   |
| Anti Mildew                   | : Passed  |
| Scratch Resistance            | : Passed  |
| Cadmium Content               | : Passed ECD 91/338/EEC                             |
| Flammability                  | : Passed (California Technical 117, Section E.2000) |



© White



© Blue



© Grey



© Brown



© Chocolate



## Specification

|              |                          |
|--------------|--------------------------|
| Emboss       | : Cast DE-90             |
| Size         | : 1.00mm x 55" (140cm)   |
| Backing      | : D.Cross Knitting       |
| Weight       | : 580±10g/m <sup>2</sup> |
| 20ft Loading | : 18,000M                |

## Feature

|                               |   |
|-------------------------------|---|
| Color Fastness                | : KSK0650 Grade 5                                   |
| Abrasion Resistance           | : ASTM D415-2002 Grade A                            |
| Migration of Certain Elements | : <10PPM  |
| UV Test                       | : Grade 8   |
| Anti Mildew                   | : Passed  |
| Scratch Resistance            | : Passed  |
| Cadmium Content               | : Passed ECD 91/338/EEC                             |
| Flammability                  | : Passed (California Technical 117, Section E.2000) |



© White



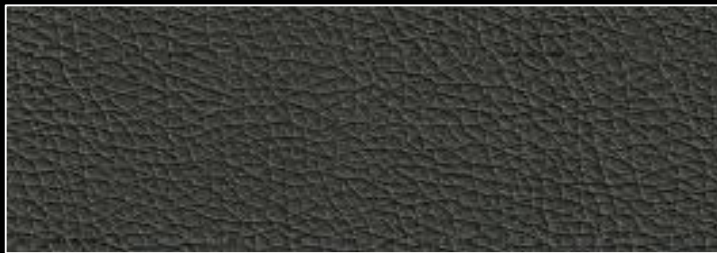
© Red



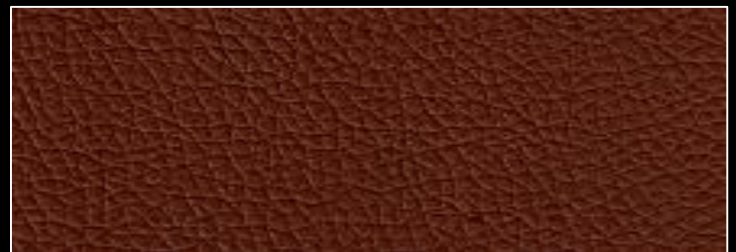
© Beige



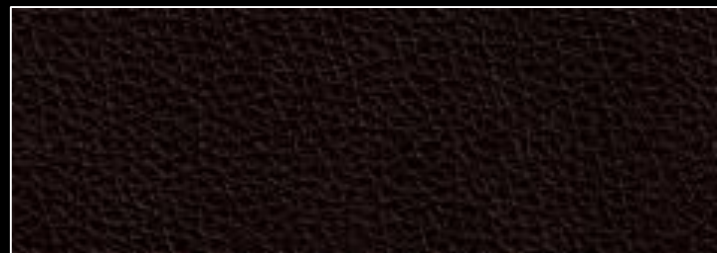
© T/Brown



© Grey



© Brown



© Chocolate



© Black

## Specification

|              |                             |
|--------------|-----------------------------|
| Emboss       | : WM 520                    |
| Size         | : 1.00mm x 55" (140cm)      |
| Backing      | : D.Cross Kintting          |
| Weight       | : $580 \pm 10 \text{g/m}^2$ |
| 20ft Loading | : 18,000M                   |

## Feature

|                                |   |
|--------------------------------|---|
| Color Fastness                 | : KSK0650 Grade 5                                   |
| Abrasion Resistance            | : ASTM D415-2002 Grade A                            |
| Migration of Certain Elements: | <10PPM  |
| UV Test                        | : Grade 8   |
| Anti Mildew                    | : Passed  |
| Scratch Resistance             | : Passed  |
| Cadmium Content                | : Passed ECD 91/338/EEC                             |
| Flammability                   | : Passed (California Technical 117, Section E.2000) |



© Beige



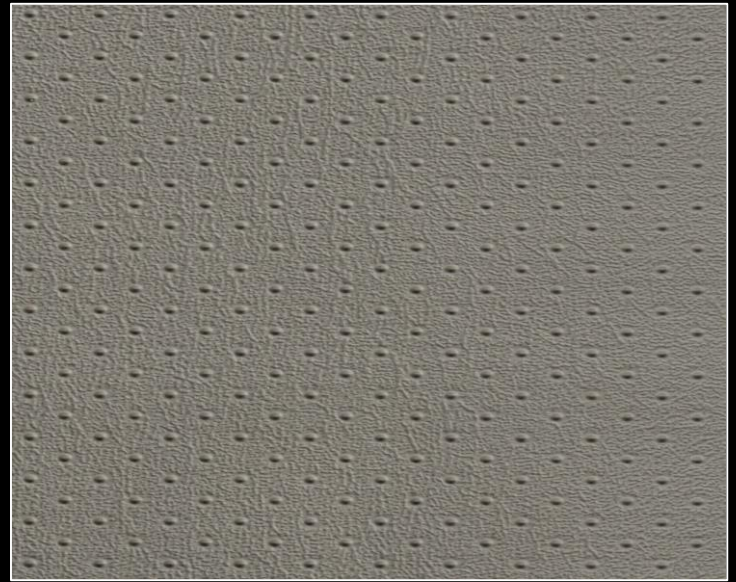
© Brown

## Specification

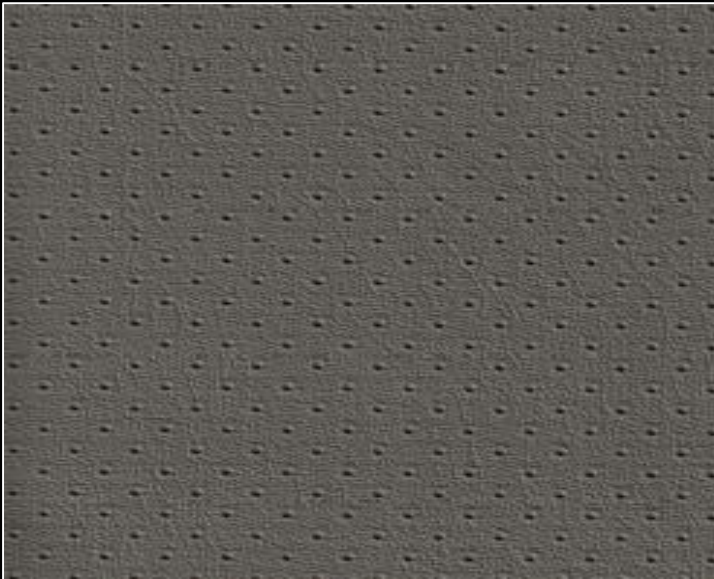
|              |                             |
|--------------|-----------------------------|
| Emboss       | : RF-001                    |
| Size         | : 0.80mm x 55" (140cm)      |
| Backing      | : L.Cross Kintting          |
| Weight       | : $580 \pm 10 \text{g/m}^2$ |
| 20ft Loading | : 21,000M                   |

## Feature

|                               |   |
|-------------------------------|---|
| Color Fastness                | : KSK0650 Grade 5                                   |
| Abrasion Resistance           | : ASTM D415-2002 Grade A                            |
| Migration of Certain Elements | : <10PPM  |
| UV Test                       | : Grade 8   |
| Anti Mildew                   | : Passed  |
| Scratch Resistance            | : Passed  |
| Cadmium Content               | : Passed ECD 91/338/EEC                             |
| Flammability                  | : Passed (California Technical 117, Section E.2000) |



© Grey



© D/Grey



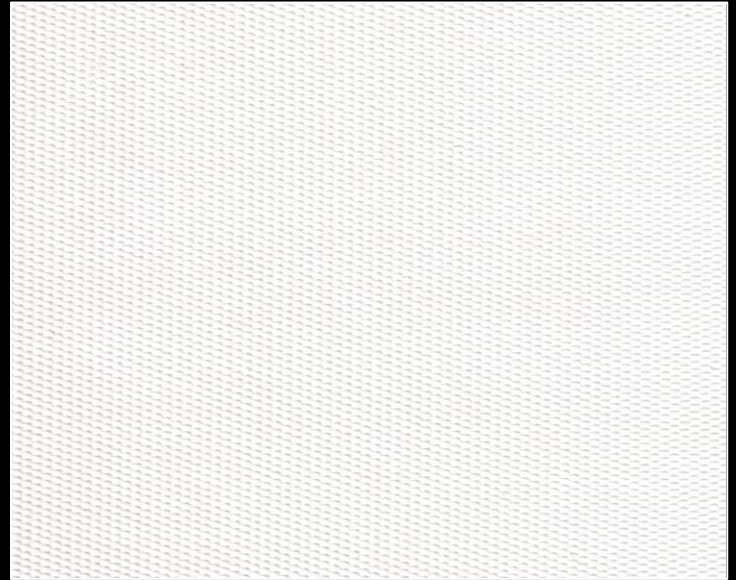
© Black

## Specification

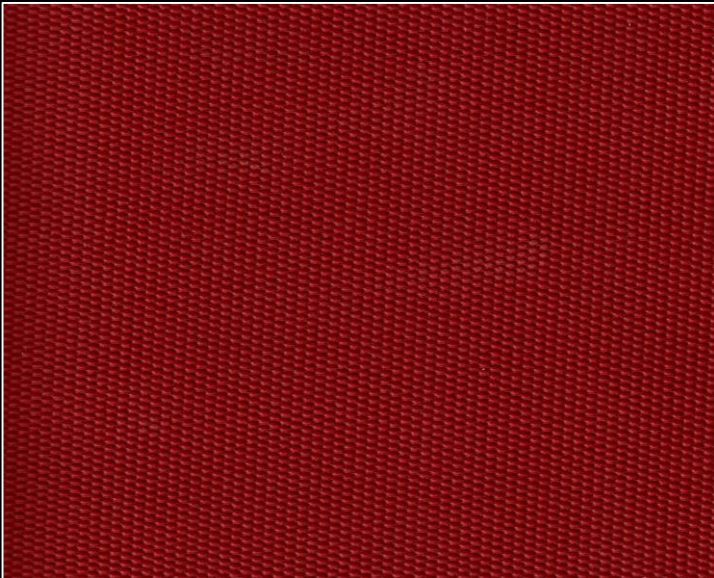
|              |                          |
|--------------|--------------------------|
| Emboss       | : F/1680D                |
| Size         | : 0.80mm x 55" (140cm)   |
| Backing      | : L.Cross Kintting       |
| Weight       | : 550±10g/m <sup>2</sup> |
| 20ft Loading | : 21,000M                |

## Feature

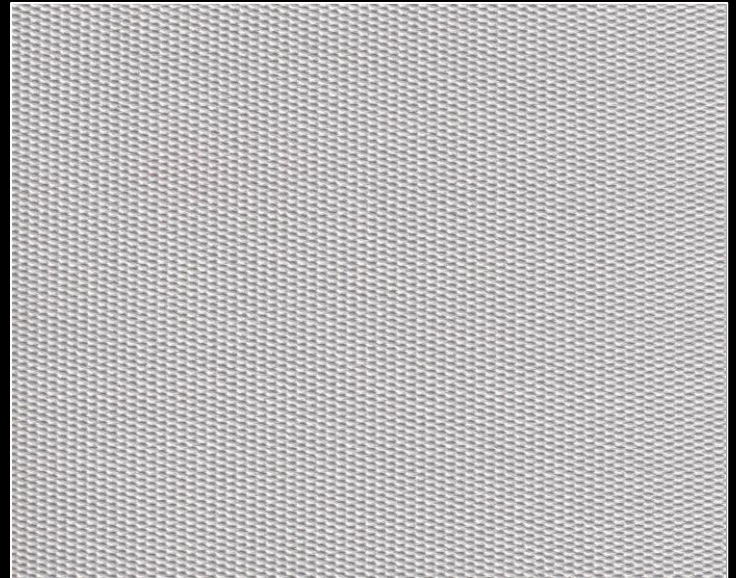
|                               |   |
|-------------------------------|---|
| Color Fastness                | : KSK0650 Grade 5                                   |
| Abrasion Resistance           | : ASTM D415-2002 Grade A                            |
| Migration of Certain Elements | : <10PPM  |
| UV Test                       | : Grade 8   |
| Anti Mildew                   | : Passed  |
| Scratch Resistance            | : Passed  |
| Cadmium Content               | : Passed ECD 91/338/EEC                             |
| Flammability                  | : Passed (California Technical 117, Section E.2000) |



© White



© Red



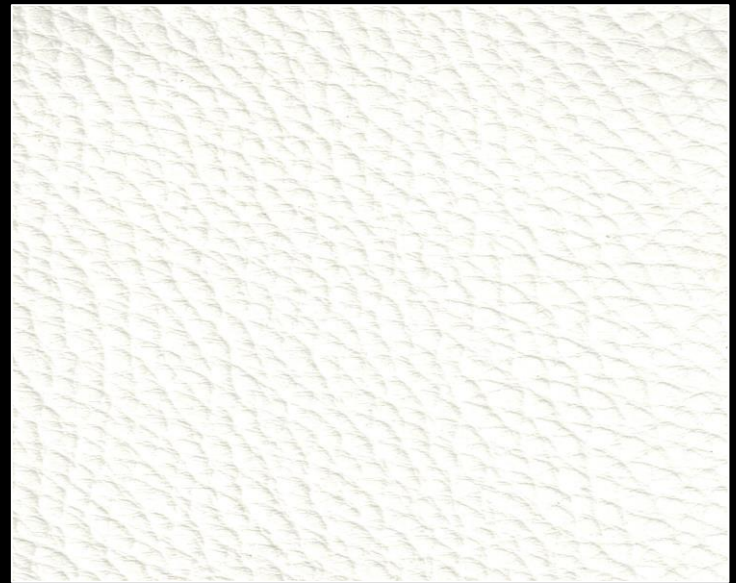
© Grey

## Specification

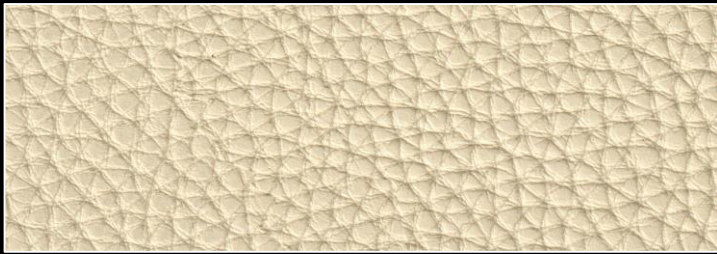
|              |                          |
|--------------|--------------------------|
| Emboss       | : WM-330                 |
| Size         | : 1.00mm x 55" (140cm)   |
| Backing      | : D.Cross Knitting       |
| Weight       | : 580±10g/m <sup>2</sup> |
| 20ft Loading | : 18,000M                |

## Feature

|                               |   |
|-------------------------------|---|
| Color Fastness                | : KSK0650 Grade 5                                   |
| Abrasion Resistance           | : ASTM D415-2002 Grade A                            |
| Migration of Certain Elements | : <10PPM  |
| UV Test                       | : Grade 8   |
| Anti Mildew                   | : Passed  |
| Scratch Resistance            | : Passed  |
| Cadmium Content               | : Passed ECD 91/338/EEC                             |
| Flammability                  | : Passed (California Technical 117, Section E.2000) |



© White



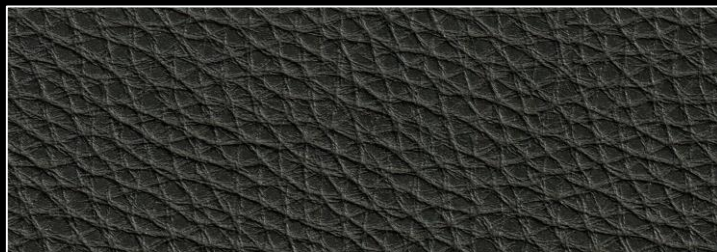
© Beige



© L.Brown



© Brown



© Grey



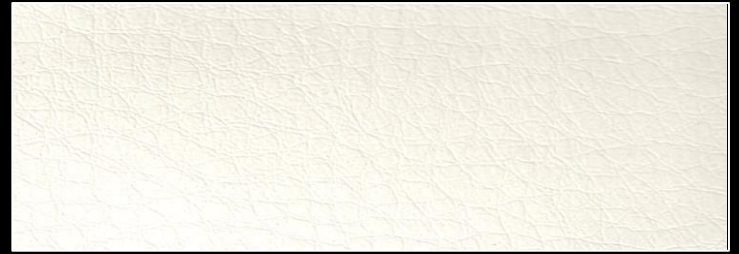
© Black

## Specification

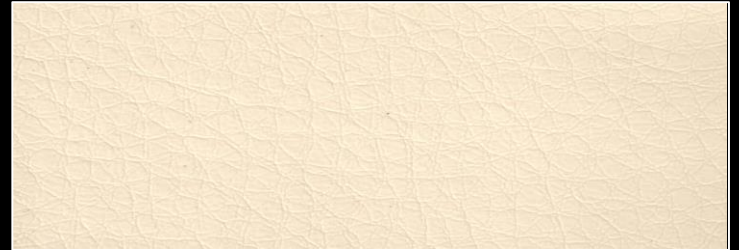
|              |                          |
|--------------|--------------------------|
| Emboss       | : WMRS-1601              |
| Size         | : 1.00mm x 55" (140cm)   |
| Backing      | : D.Cross Knitting       |
| Weight       | : 550±10g/m <sup>2</sup> |
| 20ft Loading | : 18,000M                |

## Feature

|                               |   |
|-------------------------------|---|
| Color Fastness                | : KSK0650 Grade 5                                   |
| Abrasion Resistance           | : ASTM D415-2002 Grade A                            |
| Migration of Certain Elements | : <10PPM  |
| UV Test                       | : Grade 8   |
| Anti Mildew                   | : Passed  |
| Scratch Resistance            | : Passed  |
| Cadmium Content               | : Passed ECD 91/338/EEC                             |
| Flammability                  | : Passed (California Technical 117, Section E.2000) |



© White



© Beige



© Red



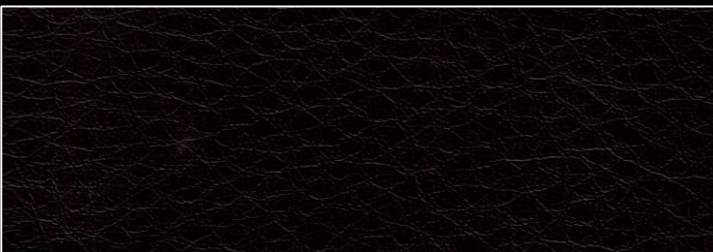
© Green



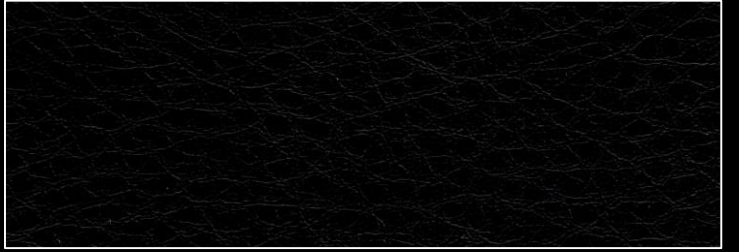
© Blue



© Brown



© Chocolate



© Black

## Specification

|              |                          |
|--------------|--------------------------|
| Emboss       | : PRANA                  |
| Size         | : 1.00mm x 55" (140cm)   |
| Backing      | : N.Cross Knitting       |
| Weight       | : 760±10g/m <sup>2</sup> |
| 20ft Loading | : 18,000M                |

## Feature

|                               |   |
|-------------------------------|---|
| Color Fastness                | : KSK0650 Grade 5                                   |
| Abrasion Resistance           | : ASTM D415-2002 Grade A                            |
| Migration of Certain Elements | : <10PPM  |
| UV Test                       | : Grade 8   |
| Anti Mildew                   | : Passed  |
| Scratch Resistance            | : Passed  |
| Cadmium Content               | : Passed ECD 91/338/EEC                             |
| Flammability                  | : Passed (California Technical 117, Section E.2000) |



◎ White



◎ T/Brown



◎ Chocolate



◎ Beige



◎ Grey



◎ Red



◎ Black

## Specification

|              |                          |
|--------------|--------------------------|
| Emboss       | : WMSF-1301              |
| Size         | : 1.00mm x 55" (140cm)   |
| Backing      | : 42's.Cross Knitting    |
| Weight       | : 820±10g/m <sup>2</sup> |
| 20ft Loading | : 18,000M                |

## Feature

|                               |   |
|-------------------------------|---|
| Color Fastness                | : KSK0650 Grade 5                                   |
| Abrasion Resistance           | : ASTM D415-2002 Grade A                            |
| Migration of Certain Elements | : <10PPM  |
| UV Test                       | : Grade 8   |
| Anti Mildew                   | : Passed  |
| Scratch Resistance            | : Passed  |
| Cadmium Content               | : Passed ECD 91/338/EEC                             |
| Flammability                  | : Passed (California Technical 117, Section E.2000) |



© White



© Beige



© Green



© Red



© Blue



© Brown



© Chocolate



© Black



## Specification

|              |                          |
|--------------|--------------------------|
| Emboss       | : WMSF-1301              |
| Size         | : 1.00mm x 55" (140cm)   |
| Backing      | : N.Cross Knitting       |
| Weight       | : 820±10g/m <sup>2</sup> |
| 20ft Loading | : 18,000M                |

## Feature

|                               |   |
|-------------------------------|---|
| Color Fastness                | : KSK0650 Grade 5                                   |
| Abrasion Resistance           | : ASTM D415-2002 Grade A                            |
| Migration of Certain Elements | : <10PPM  |
| UV Test                       | : Grade 8   |
| Anti Mildew                   | : Passed  |
| Scratch Resistance            | : Passed  |
| Cadmium Content               | : Passed ECD 91/338/EEC                             |
| Flammability                  | : Passed (California Technical 117, Section E.2000) |



© White



© Beige



© Grey



© Red



© Blue



© Brown



© Chocolate



© Black

## Specification

|              |                            |
|--------------|----------------------------|
| Emboss       | : WM-FLAT STREAM           |
| Size         | : 2.20mm x 60" (152cm)     |
| Backing      | : 28'sKintting             |
| Weight       | : 1,220±20g/m <sup>2</sup> |
| 20ft Loading | : 8,000M                   |

## Feature

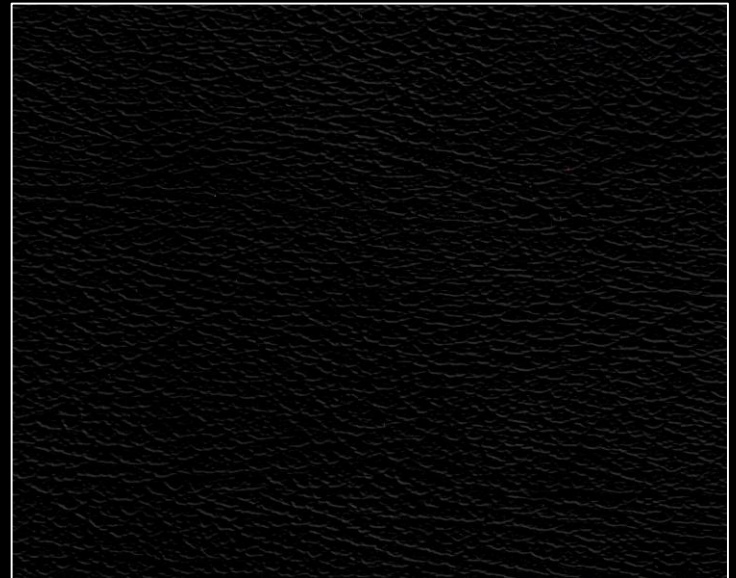
|                                |   |
|--------------------------------|---|
| Color Fastness                 | : KSK0650 Grade 5                                   |
| Abrasion Resistance            | : ASTM D415-2002 Grade A                            |
| Migration of Certain Elements: | <10PPM  |
| UV Test                        | : Grade 8   |
| Anti Mildew                    | : Passed  |
| Scratch Resistance             | : Passed  |
| Cadmium Content                | : Passed ECD 91/338/EEC                             |
| Flammability                   | : Passed (California Technical 117, Section E.2000) |



© Beige



© Grey



© Black

## Specification

|              |                             |
|--------------|-----------------------------|
| Emboss       | : PU R-64                   |
| Size         | : 0.90mm x 54" (137cm)      |
| Backing      | : T/C Twill                 |
| Weight       | : $390 \pm 10 \text{g/m}^2$ |
| 20ft Loading | : 17,500M                   |
| 40ft Loading | : 42,000M                   |

## Feature

|                                |   |
|--------------------------------|---|
| Color Fastness                 | : KSK0650 Grade 5                                   |
| Abrasion Resistance            | : ASTM D415-2002 Grade A                            |
| Migration of Certain Elements: | <10PPM  |
| UV Test                        | : Grade 8   |
| Anti Mildew                    | : Passed  |
| Scratch Resistance             | : Passed  |
| Cadmium Content                | : Passed ECD 91/338/EEC                             |
| Flammability                   | : Passed (California Technical 117, Section E.2000) |



© Grey2/Cafe



© Black

